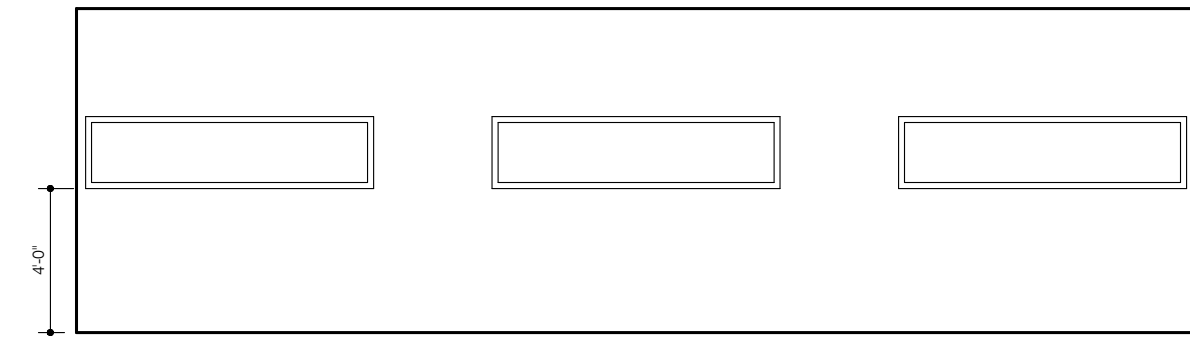
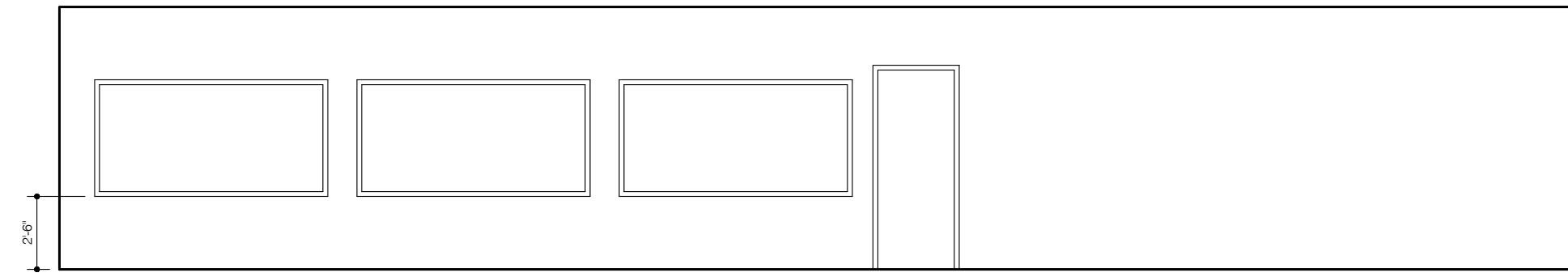


LEGEND

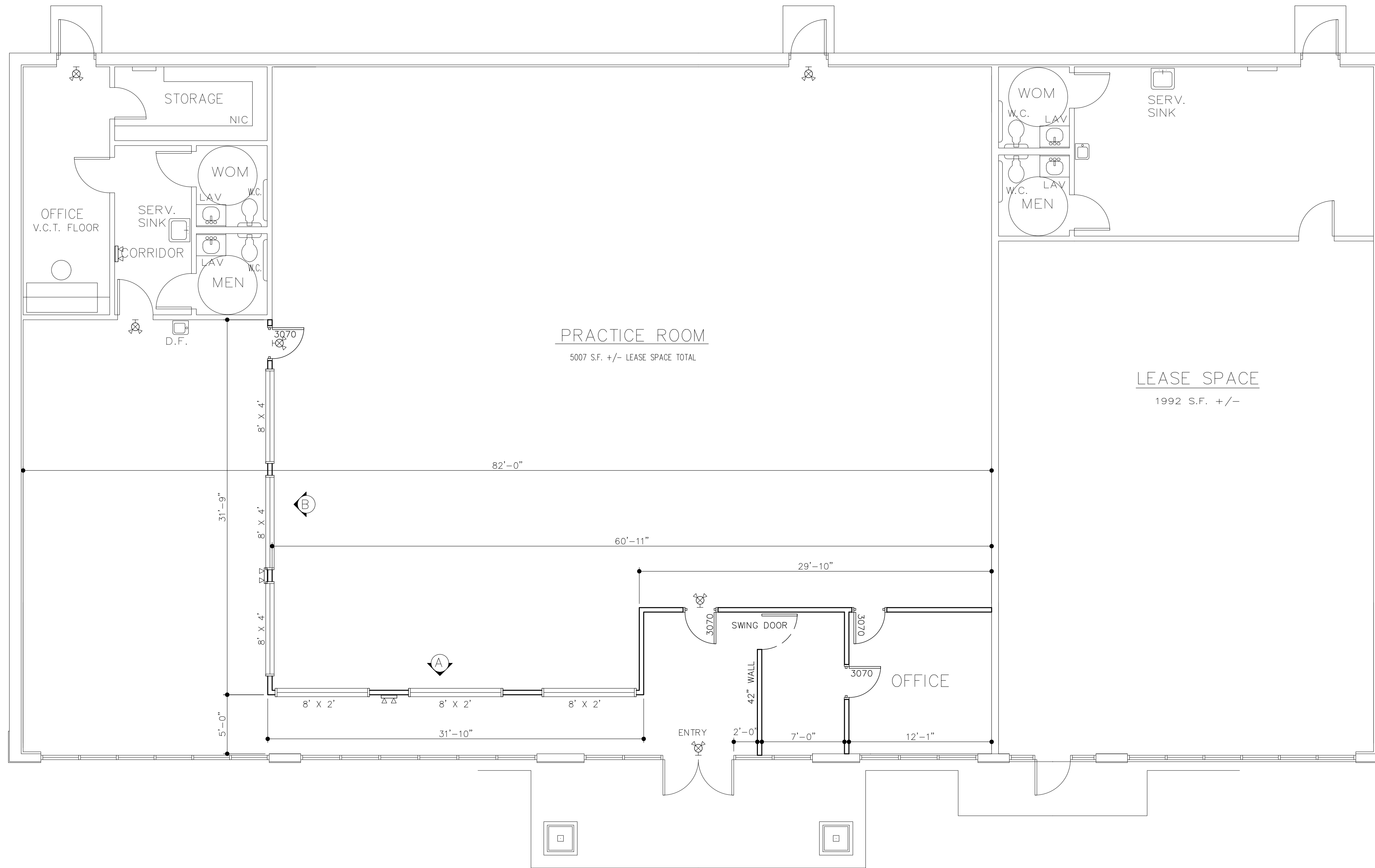
-  EXIT / EMERGENCY LIGHT COMBO
-  EMERGENCY LIGHT



ELEVATION A



ELEVATION B



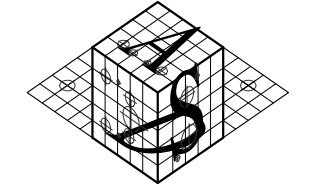
FLOOR PLAN LEASE SPACES
 SCALE : 1/8" = 1'-0"
 UP-FIT TO EXISTING SHELL BLDG

NOTE: FIELD VERIFY ALL DIMENSIONS

REVISIONS		
NO.	DATE	DESCRIPTION
1.	09/24/07	ADDED EMER LIGHT NOTES / LEGEND

NOTES

Appalachia Design Services
 INCORPORATED



245 Birch Street
 Blountville, TN 37617
 Phone: (423) 323-1206
 Fax: (423) 323-1732

COMPANY CONTACTS
 jimstreet@adscad.com
 timkuykendall@adscad.com
 jewis@adscad.com
 stevehamby@adscad.com
 steveminton@adscad.com
 christlitt@adscad.com
 aldubose@adscad.com
 heatherp@adscad.com

THIS DRAWING IS THE PROPERTY OF 'APPALACHIA DESIGN SERVICES' IS AN INSTRUMENT OF DESIGN, AND IS TO BE USED ONLY WITH RESPECT TO THE PROJECT INDICATED ON THIS DRAWING. 'APPALACHIA DESIGN SERVICES' SHALL RETAIN ALL RIGHTS TO THE USE OF THIS DRAWING AND IT SHALL NOT BE USED, COPIED OR RETAINED WITHOUT THE SPECIFIC WRITTEN CONSENT OF 'APPALACHIA DESIGN SERVICES'. ANY VIOLATION SHALL BE PROSECUTED TO THE MAXIMUM POSSIBLE EXTENT WITHIN THE LAW.

ADS PROJ. No.: 07-063
PROJECT:
Olsons' Black Belt Academy
 Building Upfit
 1900 North Roan Street
 Johnson City, Tennessee
 Washington County

TITLE
Floor Plan

DRAWN	ASD	DATE	06-07-07
CHECKED	FILE		

SHEET
A1